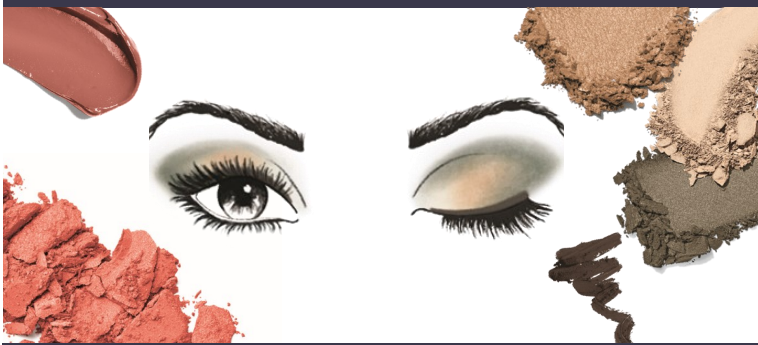


MARY KAY CHROMAFUSION LOOKS FOR LIFE

MARY KAY



GOLDEN MOSS

1. Use **Biscotti** as a base on the eyelids.
2. Apply **Gold Status** in the centers of the eyelids.
3. Smudge **Moss** into the eye creases in a “V” shape and along the top lash lines.
4. Add **MK Deep Brown** eyeliner to top lash lines, and add mascara of your choice.
5. Finish with **Juicy Peach** blush and **Naturally Buff** gel semi-shine lipstick.



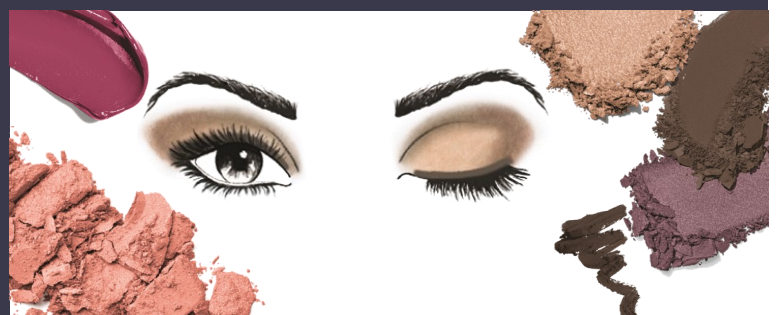
BERRIES & GOLD

1. Use **Sand Castle** as a base shade on the eyelids.
2. Apply **Candlelight** in the centers of the eyelids.
3. Accent the outer corners of the eyelids with **Merlot**.
4. Line the top and bottom lash lines with **MK Deep Brown** eyeliner, and finish with mascara of your choice.
5. Finish with **Rosy Nude** blush and **Crushed Berry** gel semi-matte lipstick.



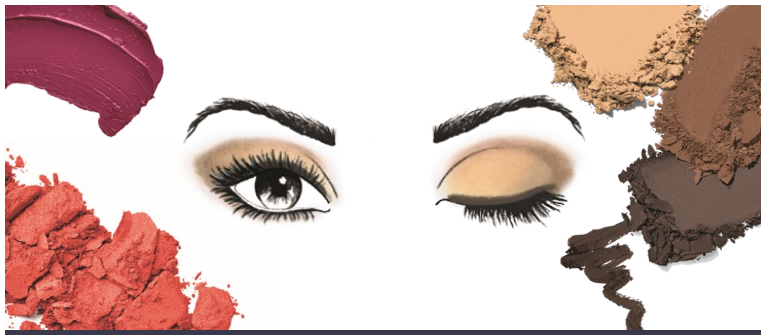
PINKS & NEUTRALS

1. Use **Cashmere Haze** as a base on the eyelids.
2. Apply **Golden Mauve** in the eye creases.
3. Highlight inner corners of the eyes with **Blossom**.
4. Apply **MK Black** eyeliner to top lash lines, and add mascara of your choice.
5. Finish with **Hint of Pink** blush and **Rosewood** gel semi-shine lipstick.



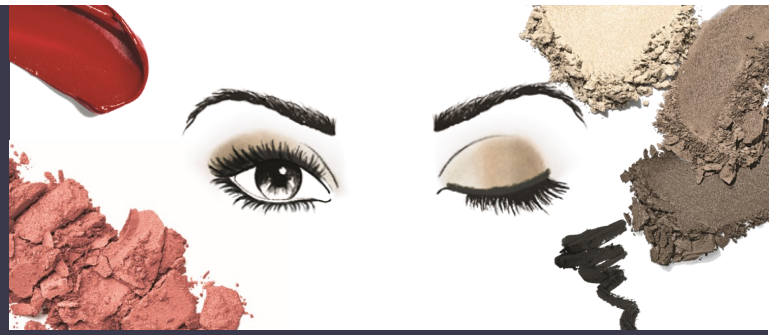
PURPLES & NEUTRALS

1. Use **Candlelight** as a base shade on the eyelids.
2. Apply **Hot Fudge** in the eye creases.
3. Smudge **Frozen Iris** in a “V” shape on top of the **Hot Fudge** just in the outer corners.
4. Apply **MK Deep Brown** eyeliner to top lash lines, and add mascara of your choice.
5. Finish with **Darling Pink** blush and **Apple Berry** gel semi-shine lipstick.



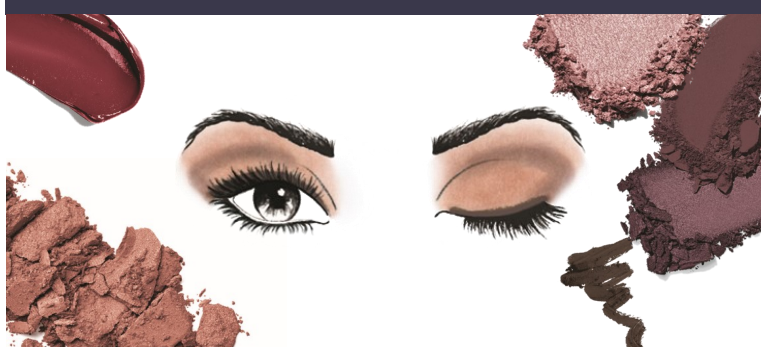
NEUTRAL MATTES

1. Use **Sand Castle** as your base shade on the entire eyelid.
2. Gently crease and define the lower lash line with **Cinnabar**.
3. Enhance the eye using **Espresso** on the outer "V" of the eye.
4. Add **MK Deep Brown** eyeliner and Mascara of your choice.
5. Finish with **Hot Coral** blush and **Crushed Berry** gel semi-matte lipstick.



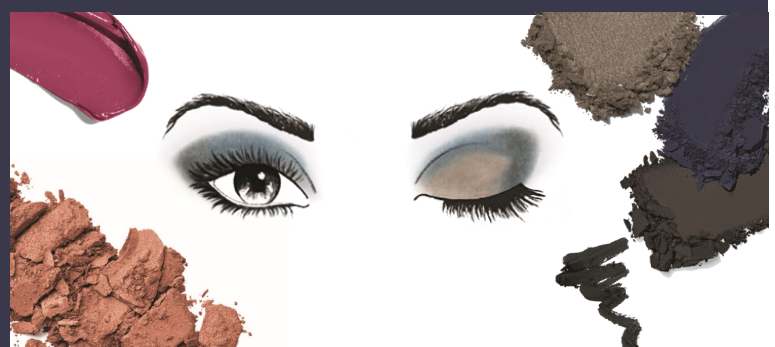
COOL METALS

1. Use **Smoky Quartz** on the middle of eyelids as the base shade.
2. Apply **Stormy** in the outer corners of the eyes for definition.
3. Highlight the inner corners of the eyes with **Crystalline**.
4. Add **MK Black** eyeliner and mascara of your choice.
5. Finish with **Shy Blush** blush and **Red Smolder** gel semi-shine lipstick.



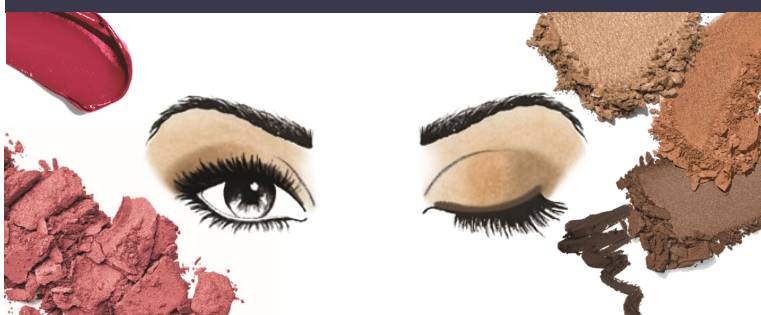
PURPLES & PLUMS

1. Give eyes an all-over wash of color by using **Sunlit Rose** as the base shade.
2. Add **Merlot** in the creases and in the outer "V" of the eyes.
3. Apply **MK Deep Brown** eyeliner to top and bottom lash lines.
4. Apply **Sweet Plum** on top of eyeliner, and finish with mascara of your choice.
5. Finish with **Desert Rose** blush and **Berry Couture** gel semi-shine lipstick.



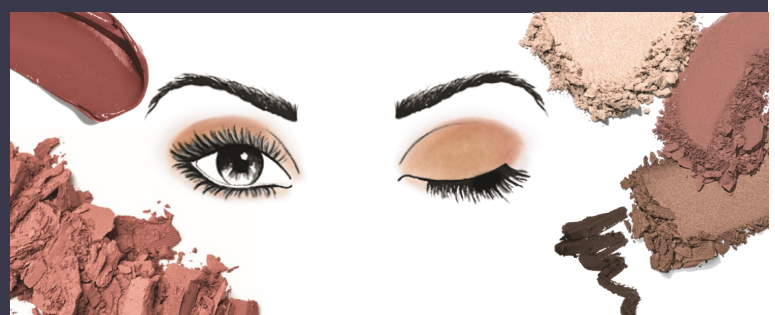
STORMY BLUE

1. Apply **Stormy** as a base shade on the eyelids.
2. Add **Evening Navy** in the creases starting from outer corners.
3. Accent eyes using **Onyx** to blend into outer corners only and along the top lash lines.
4. Add **MK Black** eyeliner to the top lash lines, and add mascara of your choice.
5. Finish with **Golden Copper** blush and **Apple Berry** gel semi-shine lipstick.



WARM METALS

1. Apply **Gold Status** as a base shade all over eyelids.
2. Accent the centers of the eyelids with **Shiny Penny**. Swipe this shade along the bottom lashlines.
3. Apply **Burnished Bronze** to the outer "V" of the eyes.
4. Add **MK Deep Brown** eyeliner and mascara of your choice.
5. Finish with **Wineberry** blush and **Scarlet Red** gel semi-shine lipstick.



PINKS & MAUVES

1. Use **Rose Gold** as the base shade on eyelids.
2. Apply **Dusty Rose** to the creases and lower lash lines.
3. Highlight the inner corners of eyes and brow bones with **Blossom**.
4. Add **MK Deep Brown** eyeliner and mascara of your choice.
5. Finish with **Rosy Nude** blush and **Rosewood** gel semi-shine lipstick.